

TECHNICAL REFERENCE MANUAL

MOUNTING PLATES V23-1



1. Table of contents

1. Table of contents	2
About this document	4
Legend	4
Online versions	4
Device Technical Reference Manual	4
DEWEsoft® User Manual	4
DS-MOUNT (Mounting plates)	5
1. DS-MOUNT-1	5
1.1. DS-MOUNT-1 Technical drawing	6
2. DS-MOUNT-2	6
2.1. DS-MOUNT-2 Technical drawing	7
3. DS-MOUNT-2K	8
3.1. DS-MOUNT-2K Technical drawing	8
4. DS-MOUNT-3	9
4.1. DS-MOUNT-3 Technical drawing	10
5. DS-MOUNT-4	11
5.1. DS-MOUNT-4 Technical drawing	11
6. DS-MOUNT7	12
6.1. DS-MOUNT7 Technical drawing	12
7. DS-MOUNT-19	13
7.1. DS-MOUNT-19 Technical drawing	13
8. DS-MOUNT-19-R8x	14
8.1. DS-MOUNT-19-R8x Technical drawing	15
9. DS-MOUNT-DISP-12	16
9.1. DS-MOUNT-DISP-12 Technical drawing	17
10. DS-MOUNT-K1	18
11. DS-MOUNT-K2	19
11.1. DS-MOUNT-K2 Technical drawing	19
12. DS-MOUNT-K3	20
12.1. DS-MOUNT-K3 Technical drawing	21
13. DS-MOUNT2-M	22
13.1. DS-MOUNT2-M Technical drawing	23
14. DS-MOUNT-R1x-R2x	24
14.1. DS-MOUNT-R1x-R2x Technical drawing	24
Warranty information	25
Calibration	25
Support	25
Service/repair	25
Restricted Rights	25
Printing History	26
Copyright	26
Trademarks	26

Safety instructions	26
Safety symbols in the manual	26
General Safety Instructions	26
Environmental Considerations	27
Product End-of-Life Handling	27
System and Components Recycling	27
General safety and hazard warnings for all Dewesoft systems	27
Documentation version history	29

About this document

This is the user's manual for mounting plates available for different product lines. It includes renders, technical drawings and how-to instructions.

Legend

The following symbols and formats will be used throughout the document.



Important

It gives you important information about the subject.
Please read carefully!



Hint

It gives you a hint or provides additional information about a subject.



Example

Gives you an example of a specific subject.

Online versions

Device Technical Reference Manual

The most recent version of this manual can be downloaded from our homepage:

<https://download.dewesoft.com/list/manuals-brochures/hardware-manuals>

In the *Hardware Manuals* section click the download link for the *Device® technical reference manual*.

DEWESoft® User Manual

The DEWESoft® User Manual document provides basics and additional information and examples for working with DEWESoft® and certain parts of the program.

The latest version of the DEWESoft® tutorials can be found here:

<https://download.dewesoft.com/list/manuals-brochures/software-manuals>

In the Software Manuals section click the download link of the DEWESoft X User Manual entry.

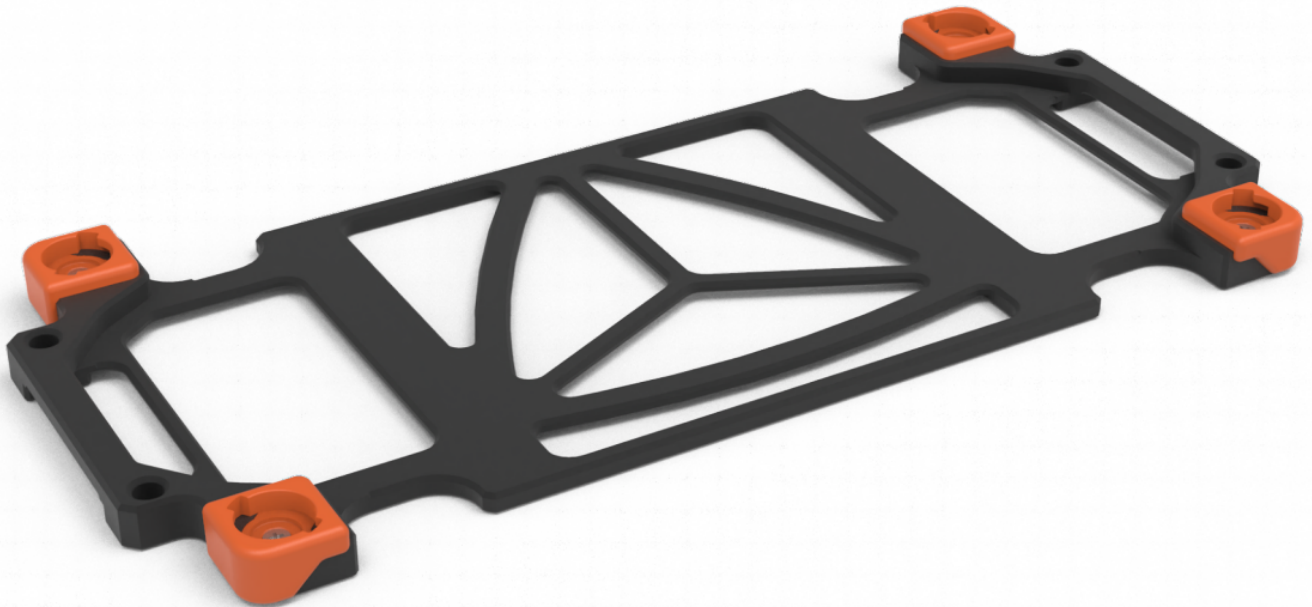
DS-MOUNT (Mounting plates)

- Mounting plates are equipped with a smart click mechanism that allows several Dewesoft DAQ systems to be firmly fixed to the mounting plate.
- All mounting plates are milled from a single block of aluminum in our state-of-the-art CNC tool shop.
- Different mounting plates allow mounting SIRIUS units to rigid surfaces and to stack KRYPTON units or other devices and accessories on the top.
- Rugged mounting systems for SIRIUSw and SBOXw expands the usability of these devices even further providing a vibration-damping mechanism.

1. DS-MOUNT-1

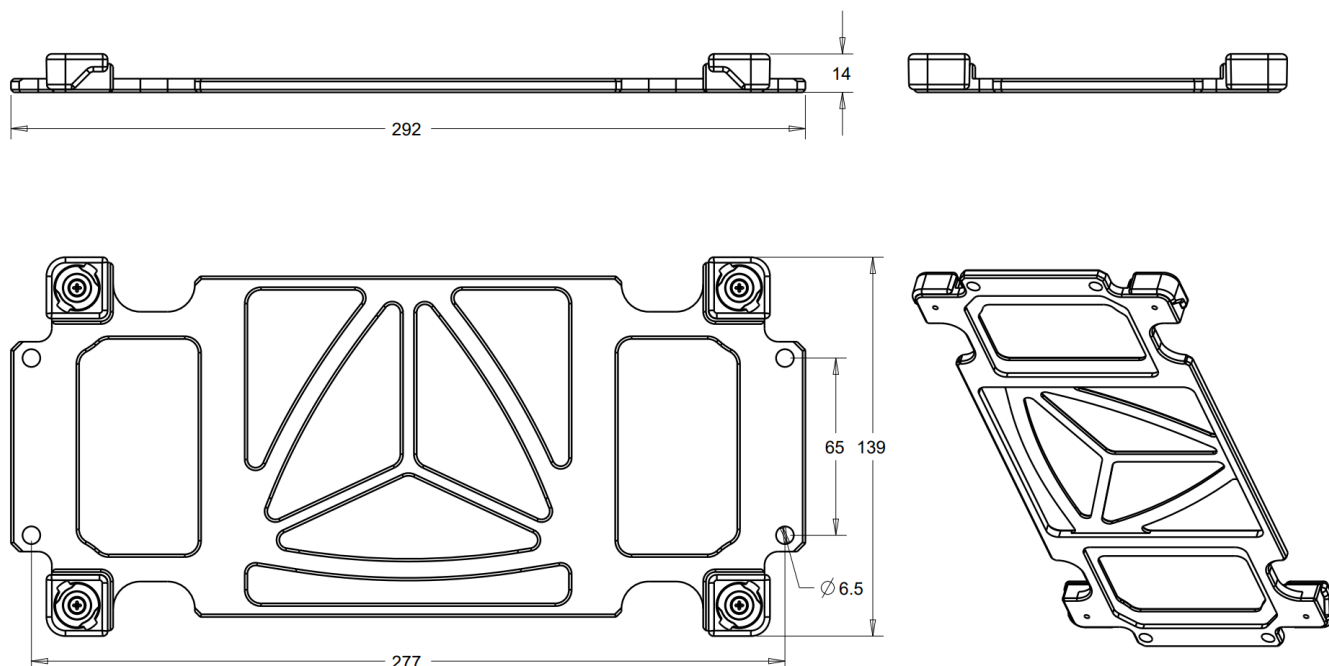
This mount can be used to mount SIRIUS data acquisition systems and SBOX data processing computers to the wall, floor, or any other flat surface.

The DS-MOUNT1 is equipped with 4 holes where you can firmly screw it to any flat surface. Smart click corners are available where you can firmly clip SIRIUS, SBOX, MINITAURS, IOLITE, or SBOX systems with the smart click mechanism.



DS-MOUNT-1

1.1. DS-MOUNT-1 Technical drawing



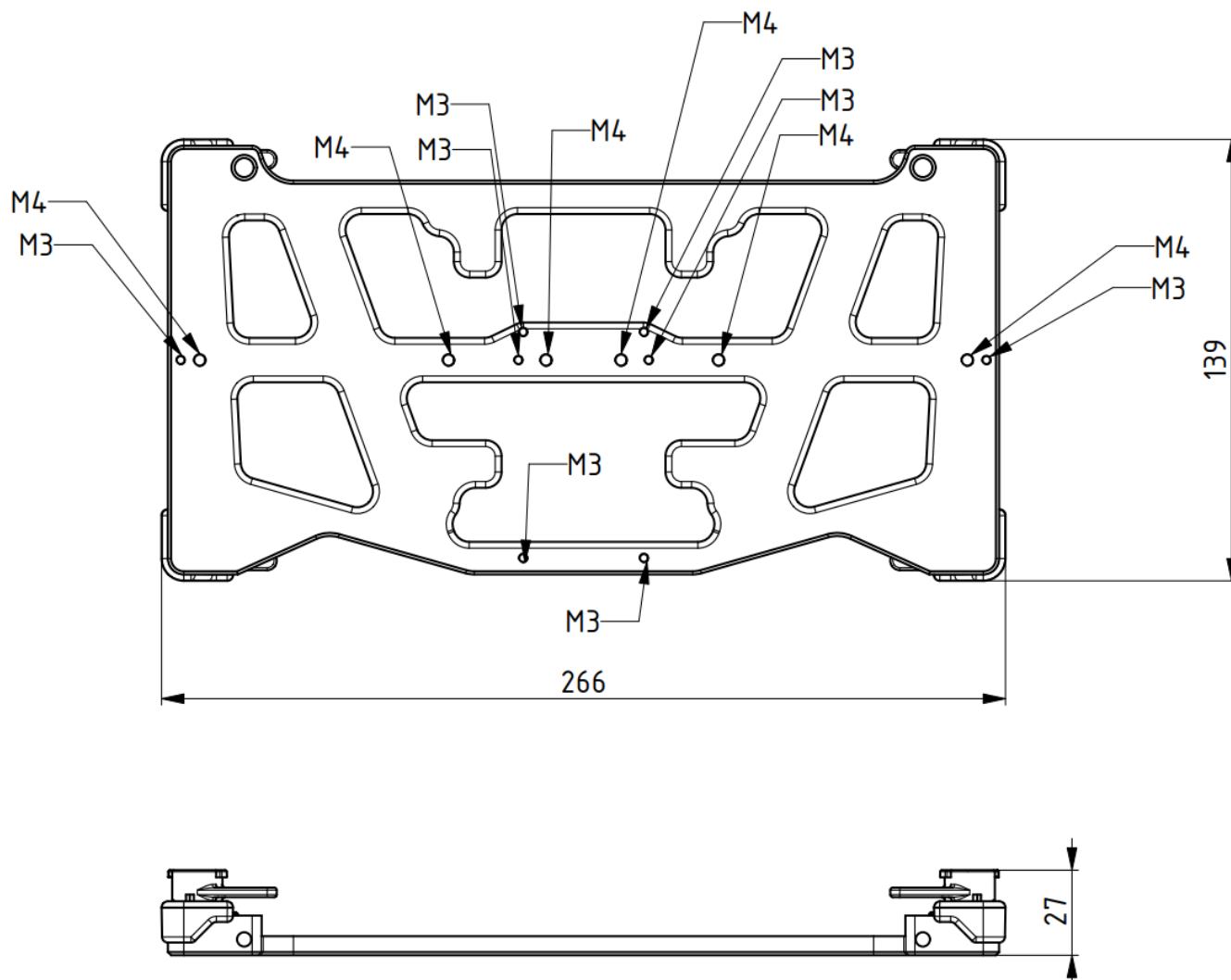
2. DS-MOUNT-2

DS-MOUNT-2 can be used to fit small instruments, such as DS-CAN2, GPS/IMU devices, or any other accessory that needs to be firmly fixed on top of the SIRIUS DAQ systems or SBOX processing computers.



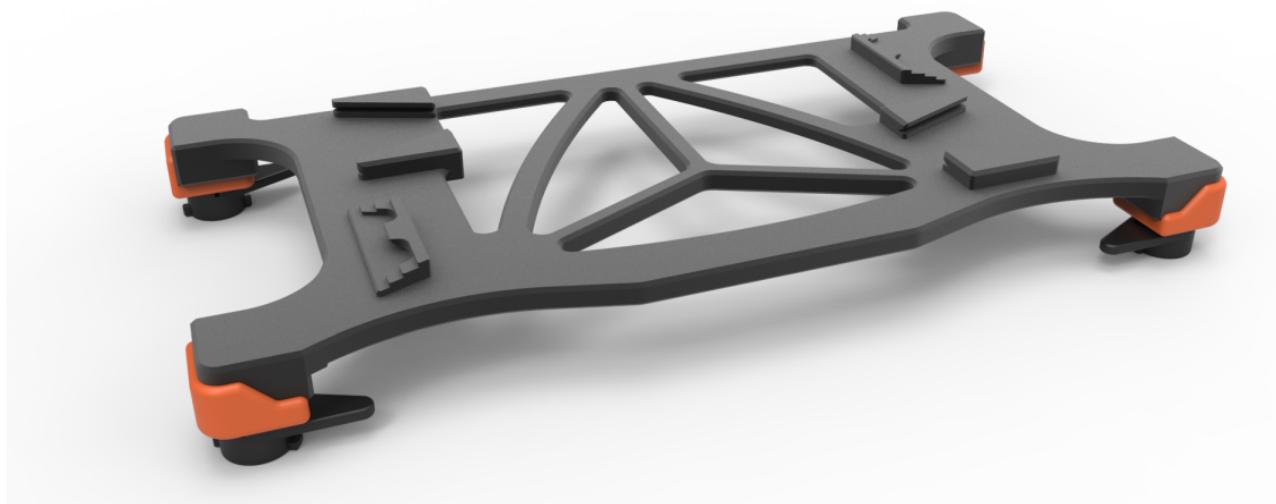
DS-MOUNT-2

2.1. DS-MOUNT-2 Technical drawing



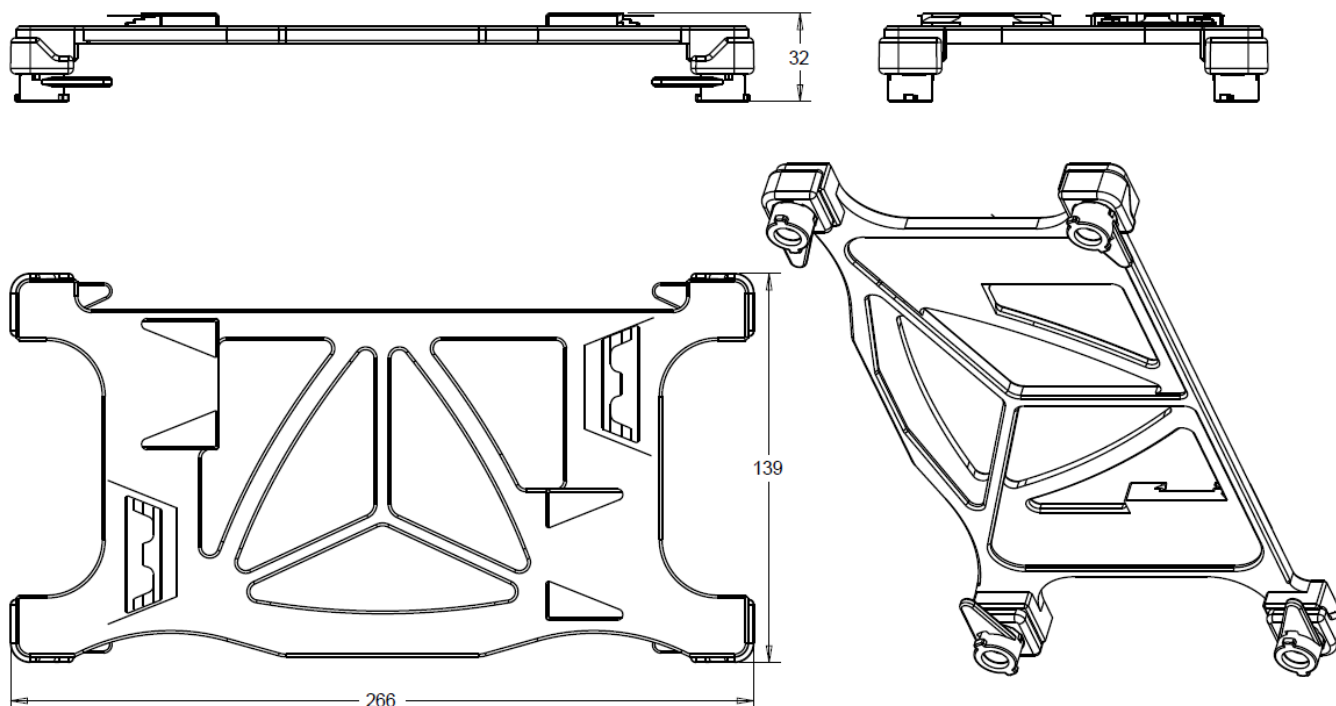
3. DS-MOUNT-2K

Top mounting plate for binding up to two KRYPTON data acquisition systems to the SIRIUS or MINITAURs data acquisition systems, SBOX computer, or battery packs.



DS-MOUNT-2K

3.1. DS-MOUNT-2K Technical drawing



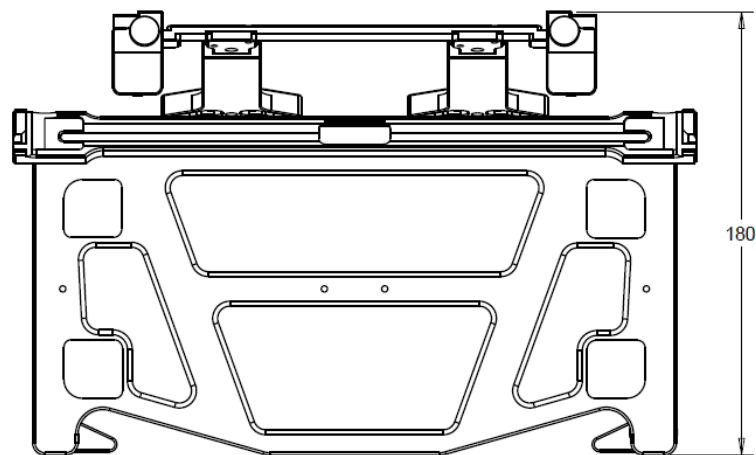
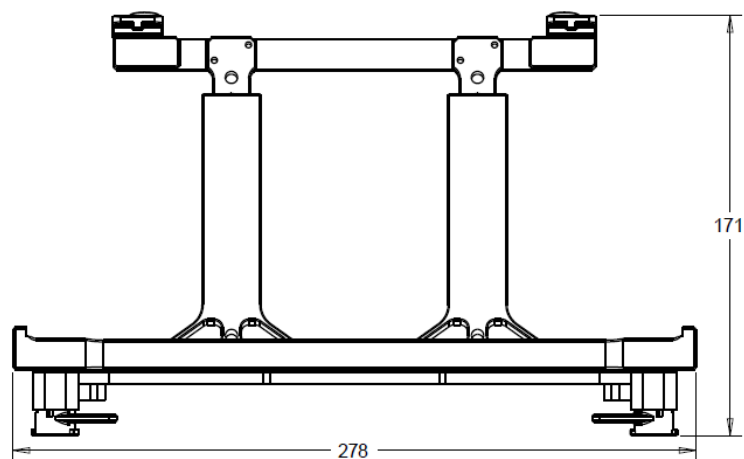
4. DS-MOUNT-3

Top plate with display handle and holder for our portable LCD displays. Clever click mechanism will allow the mount to fit our SIRIUS, IOLITE, SBOX, MINITAURs, or DS-BP battery packs and allow easy mounting of the LCD display.

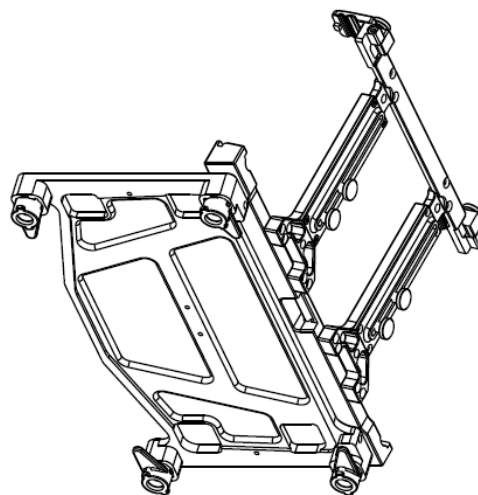
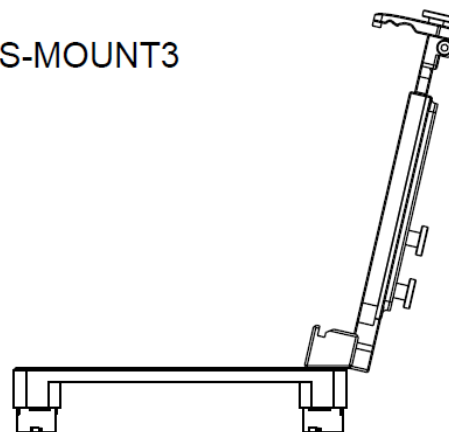


DS-MOUNT-3

4.1. DS-MOUNT-3 Technical drawing

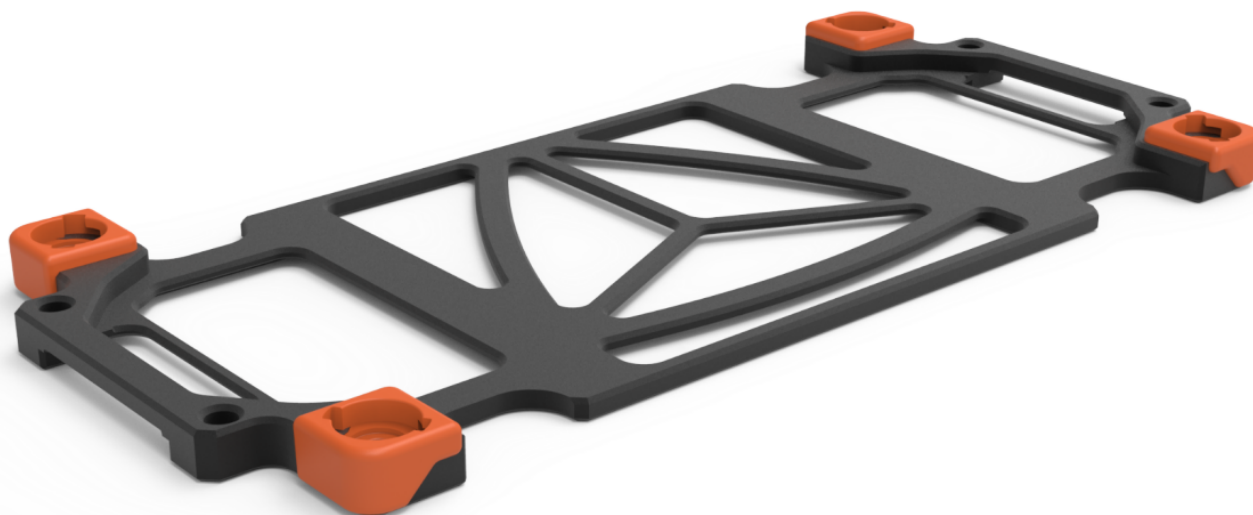


DS-MOUNT3



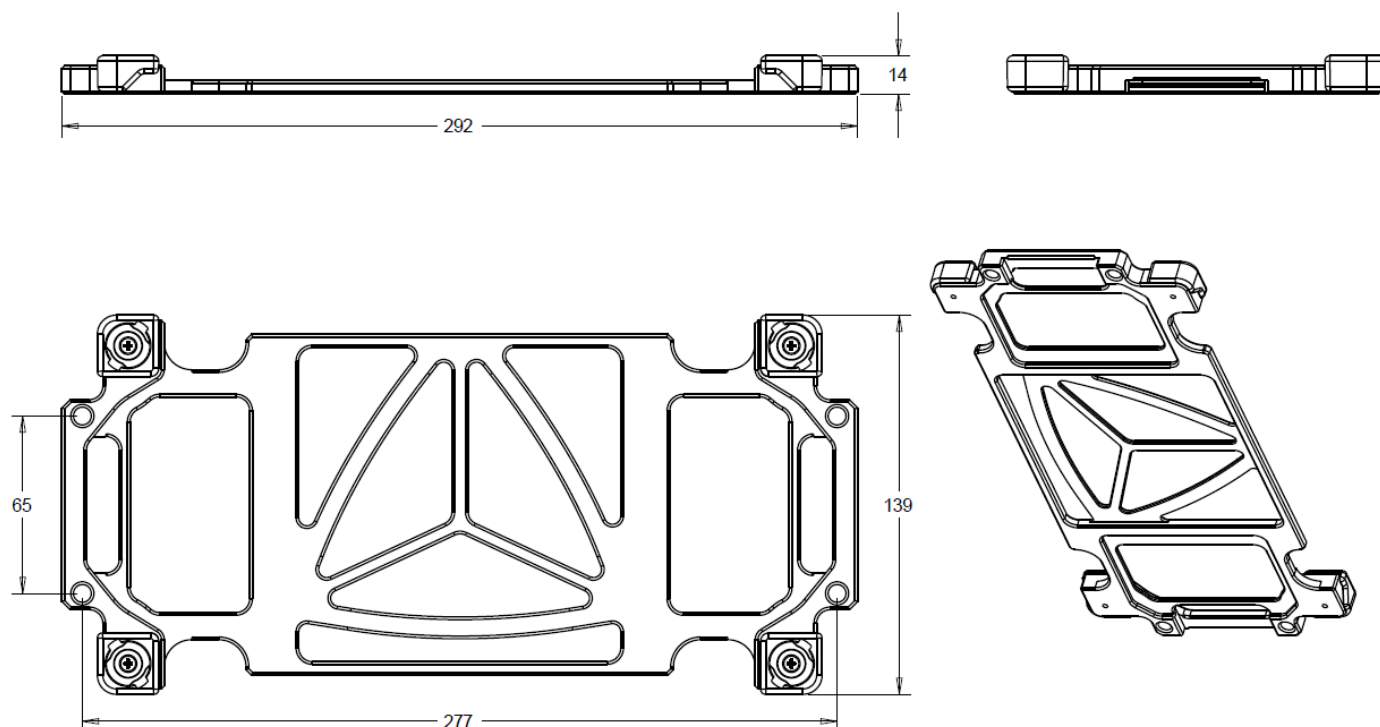
5. DS-MOUNT-4

Bottom aluminium mounting plate with easy click mechanism, same as on SIRIUS single slice.
Fits to SIRIUS slice, R2, R4, SBOX, BP2i, BP4i



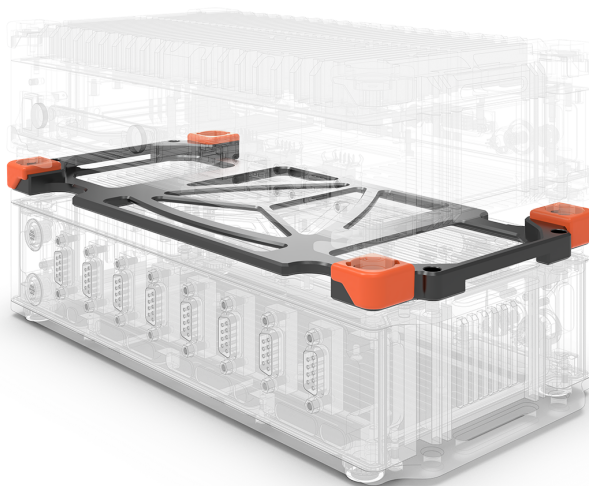
DS-MOUNT-4

5.1. DS-MOUNT-4 Technical drawing



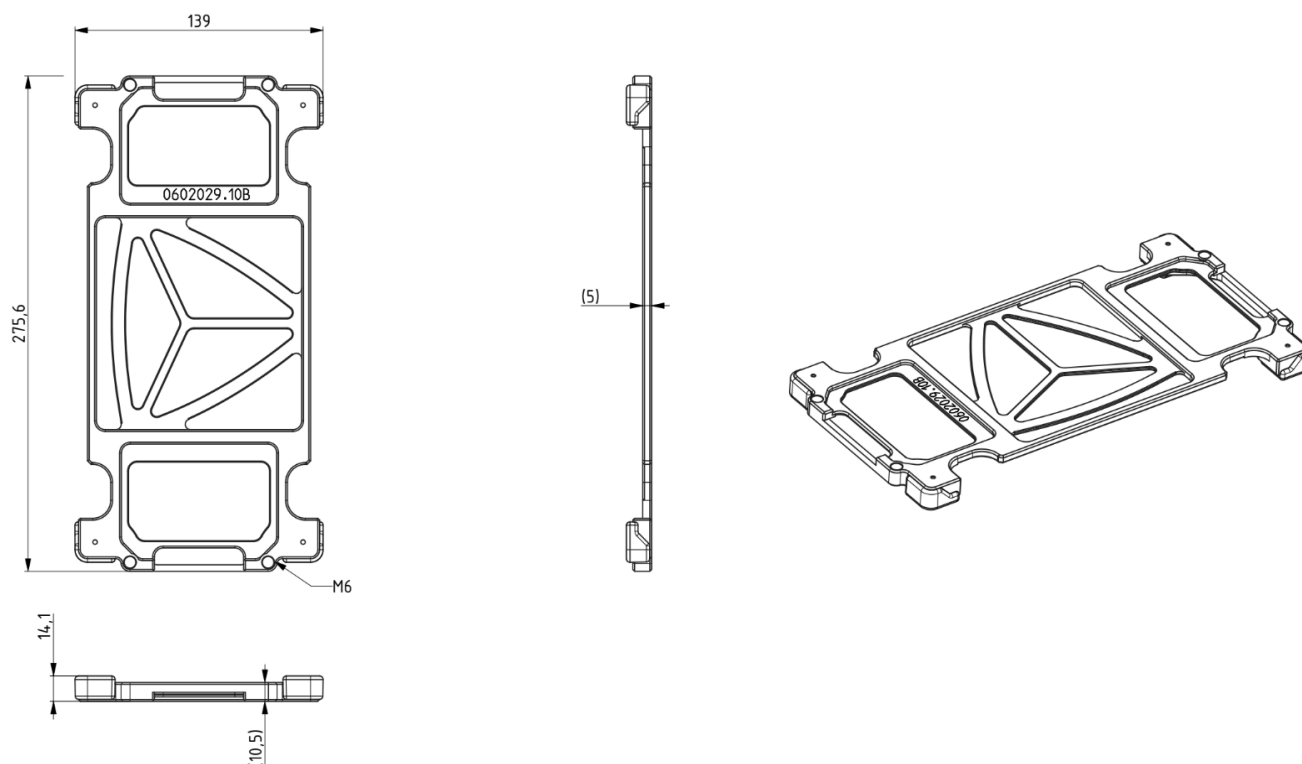
6. DS-MOUNT7

Aluminum top mounting plate with handle and click mechanism, to mount instruments on top.
Fits to SBOXwe. Units that can be mounted on top: SIRIUS slices, R2, R4, SBOX, DS-BP2i and DS-BP4i.



DS-MOUNT7

6.1. DS-MOUNT7 Technical drawing



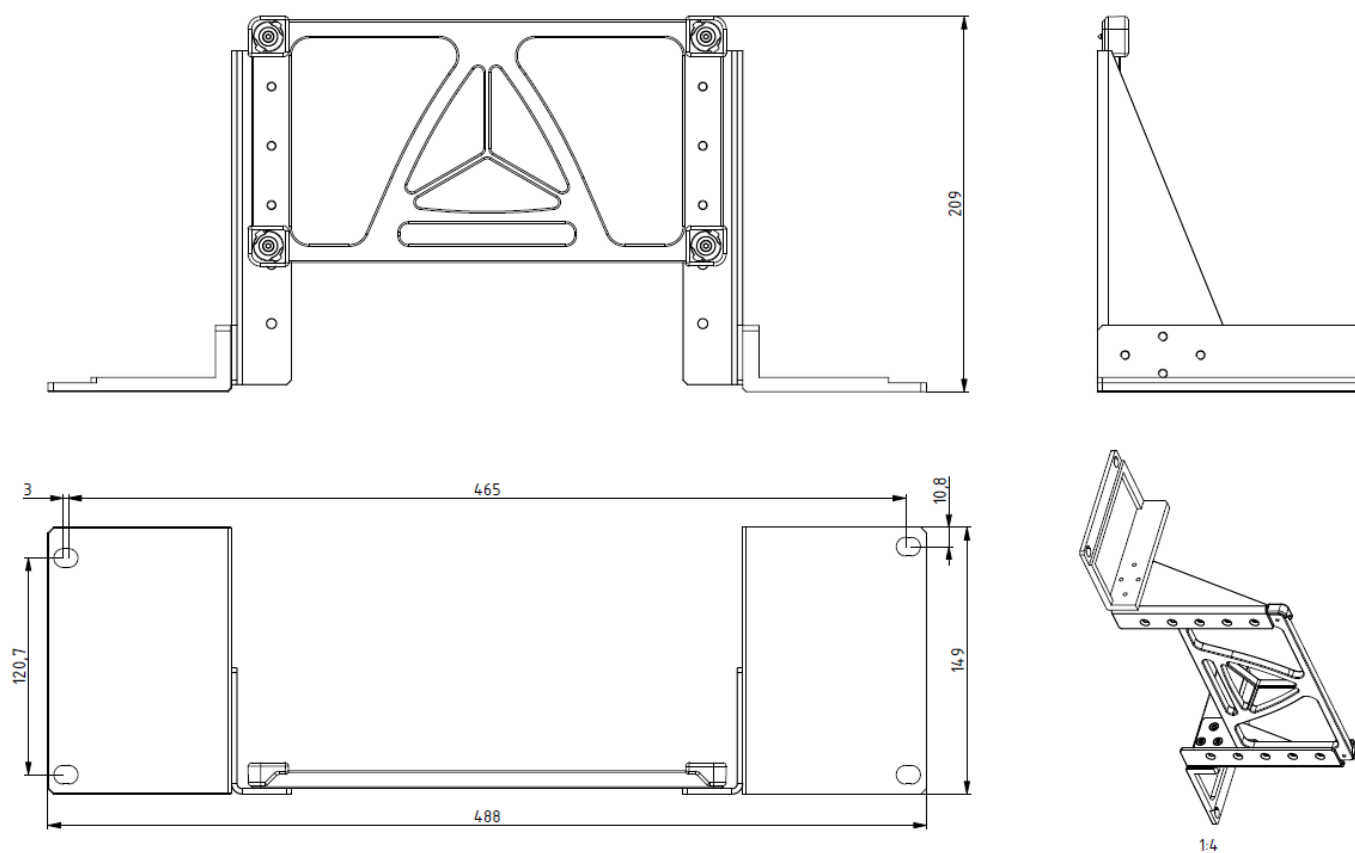
7. DS-MOUNT-19

Mounting plate for fitting SIRIUS, MINITAURS data acquisition systems, and SBOX data loggers into a 19" rack cabinet.



DS-MOUNT-19

7.1. DS-MOUNT-19 Technical drawing



8. DS-MOUNT-19-R8x

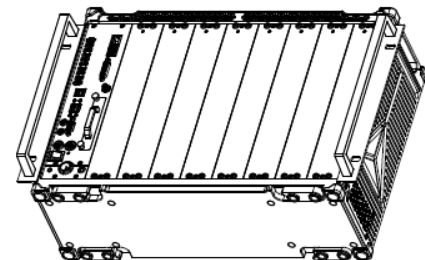
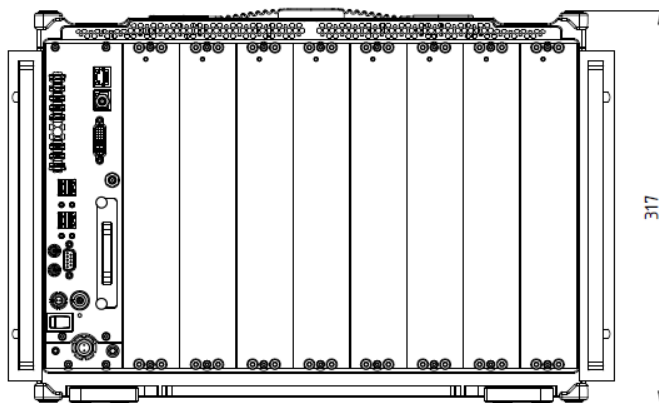
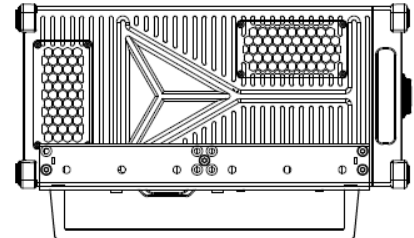
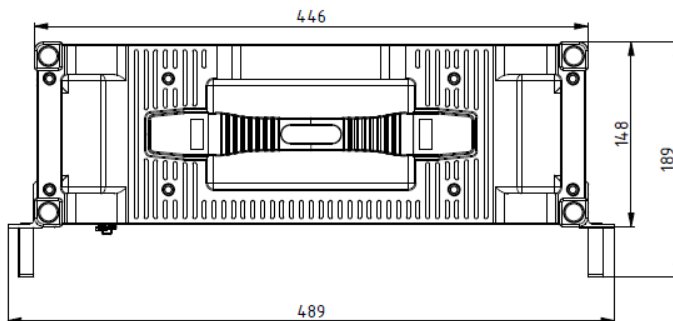
19" rack-compatible mounting kit for SIRIUS R8x data acquisition systems. The easy-to-screw-on handles can enable R8 systems to be easily mounted in standard 19" rack cabinets.

It fits all R8 models - R8, R8B, R8D, R8DB, R8R, R8Rrt, R8rt



DS-MOUNT-19-R8x

8.1. DS-MOUNT-19-R8x Technical drawing



All dimensions are in mm.

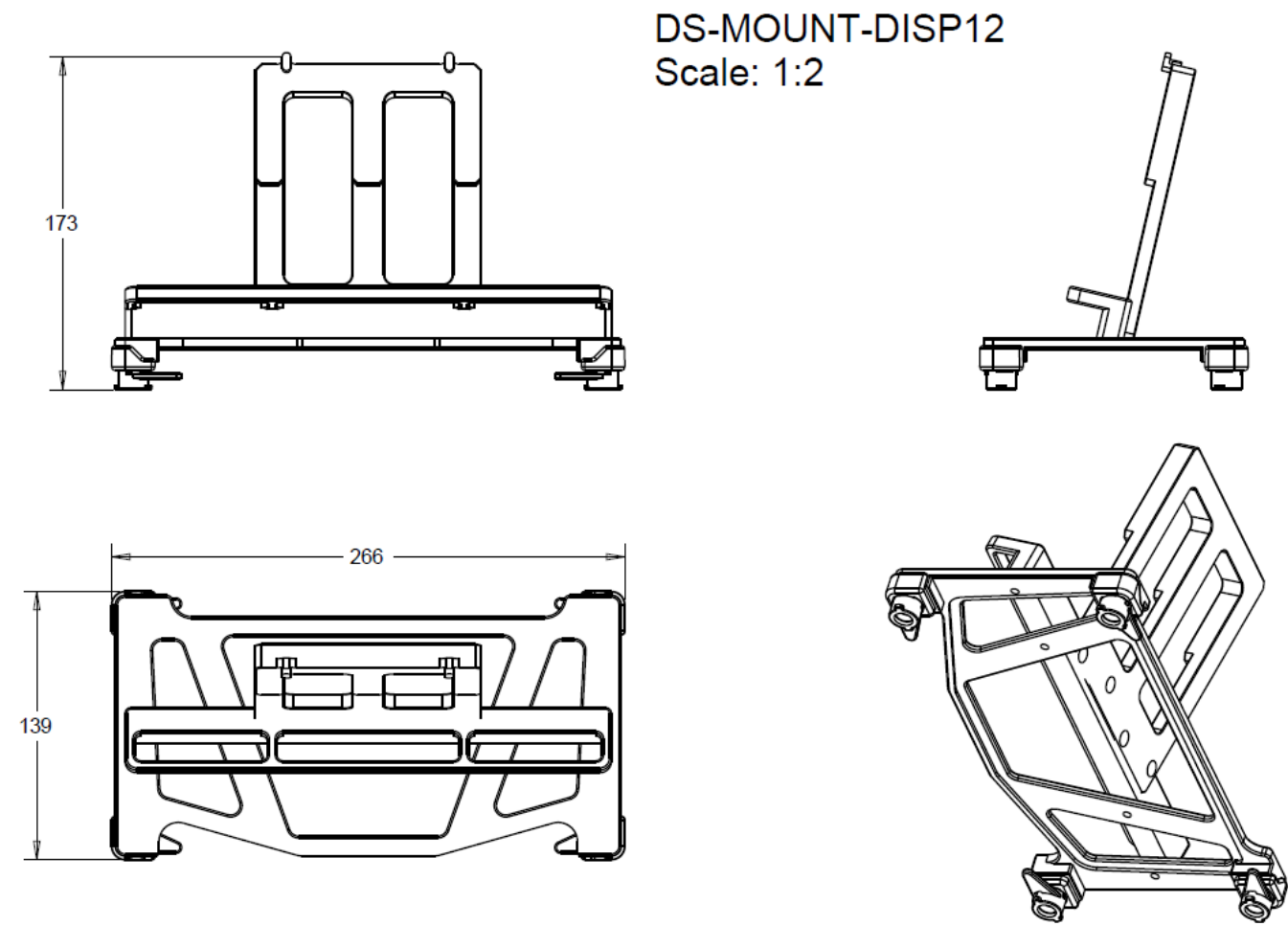
9. DS-MOUNT-DISP-12

Mount that fits DS-DISP-12, our 12" multi-touch LED screen DS-DISP-12, on a SIRIUS slice compatible plate. Smart click-mechanism enables plane and display to be firmly fixed above SIRIUS DAQ system, SBOX data logger or MINITAURs DAQ system.



DS-MOUNT-DISP-12

9.1. DS-MOUNT-DISP-12 Technical drawing

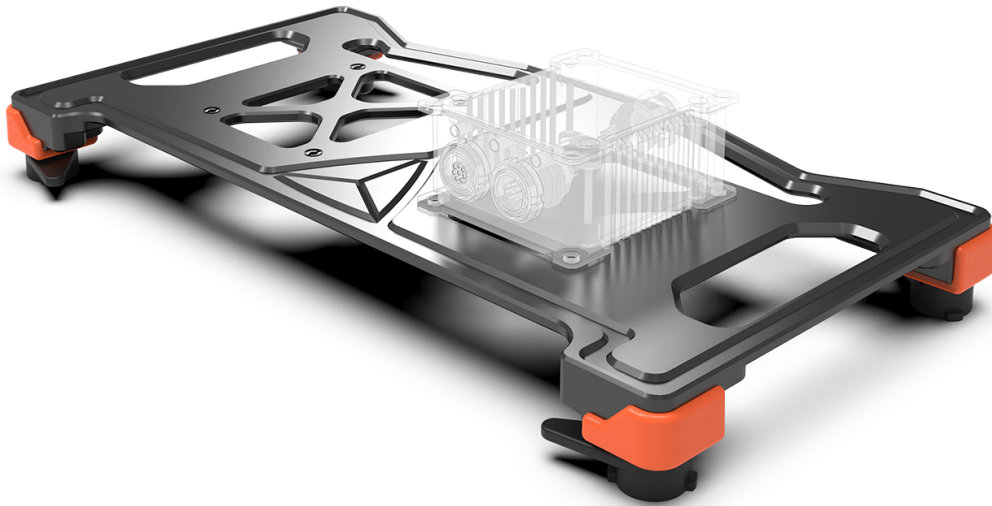


10. DS-MOUNT-K1

Aluminum mounting for fitting KRYPTON ONE products.

Fits to: SIRIUS slices, R2, R4, SBOX, DS-BP2i and DS-BP4i.

Note: The mechanism is not meant to sustain large vibrations and a huge stack of devices.



Mounting adapter for attaching KRYPTON ONE modules to the SIRIUS module

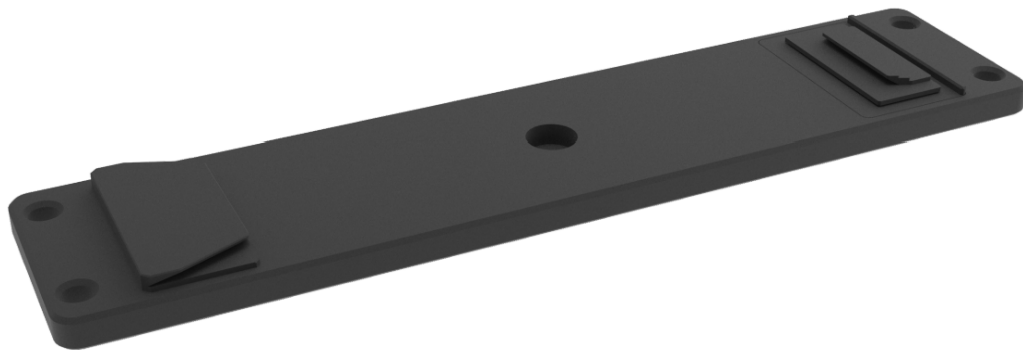
11. DS-MOUNT-K2

Mounting plate for a KRYPTON and KRYPTON CPU data acquisition systems. The mount features an aluminum ground plate with an easy click mechanism, which is the same as the one found on the top side of all Krypton instruments. It is suitable for mounting any Krypton as well as a Krypton CPU.



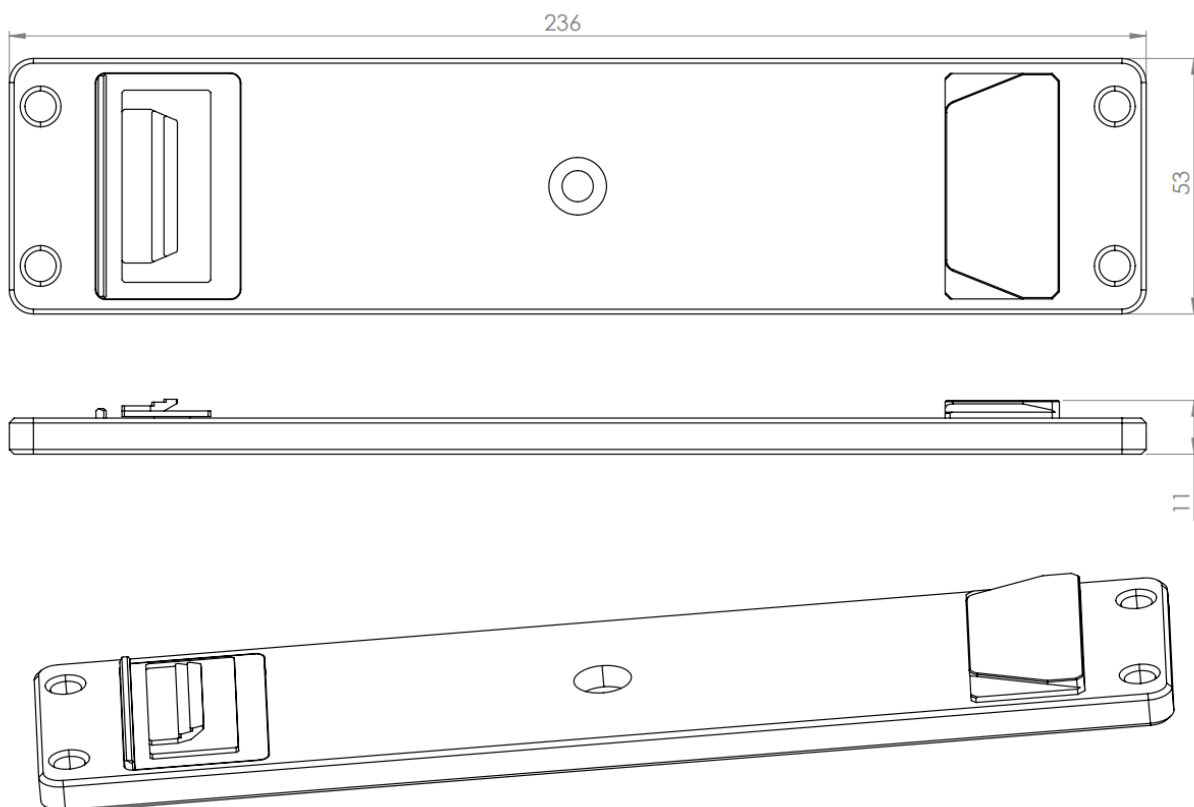
Important

Please note that the mechanism is not meant to sustain large vibrations and a huge stack of devices.



DS-MOUNT-K2

11.1. DS-MOUNT-K2 Technical drawing



12. DS-MOUNT-K3

Top aluminium mounting plate with click mechanism, same as on the KRYPTON multi units.
Fits to: KRYPTON multi, will **NOT** fit KRYPTON CPU.



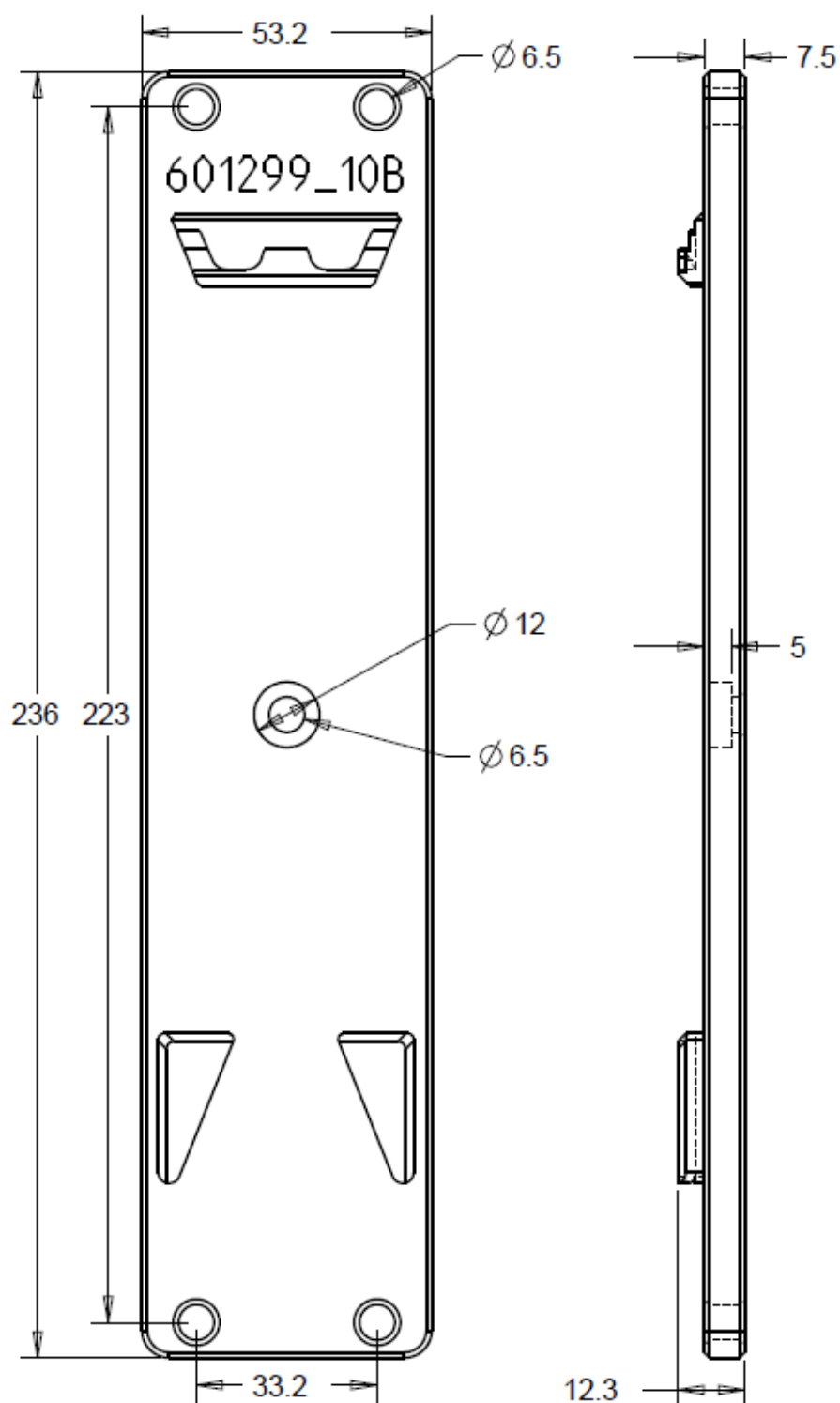
Important

Please note that the mechanism is not meant to sustain large vibrations and a huge stack of devices.



DS-MOUNT-K3

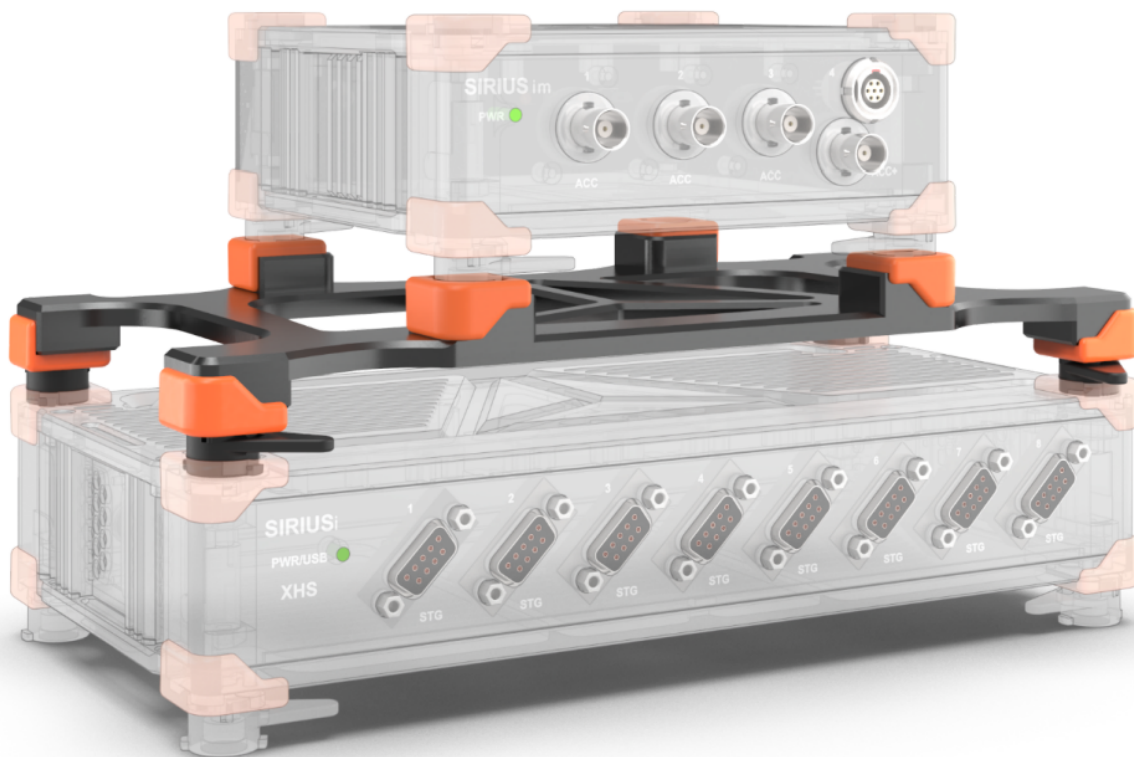
12.1. DS-MOUNT-K3 Technical drawing



13. DS-MOUNT2-M

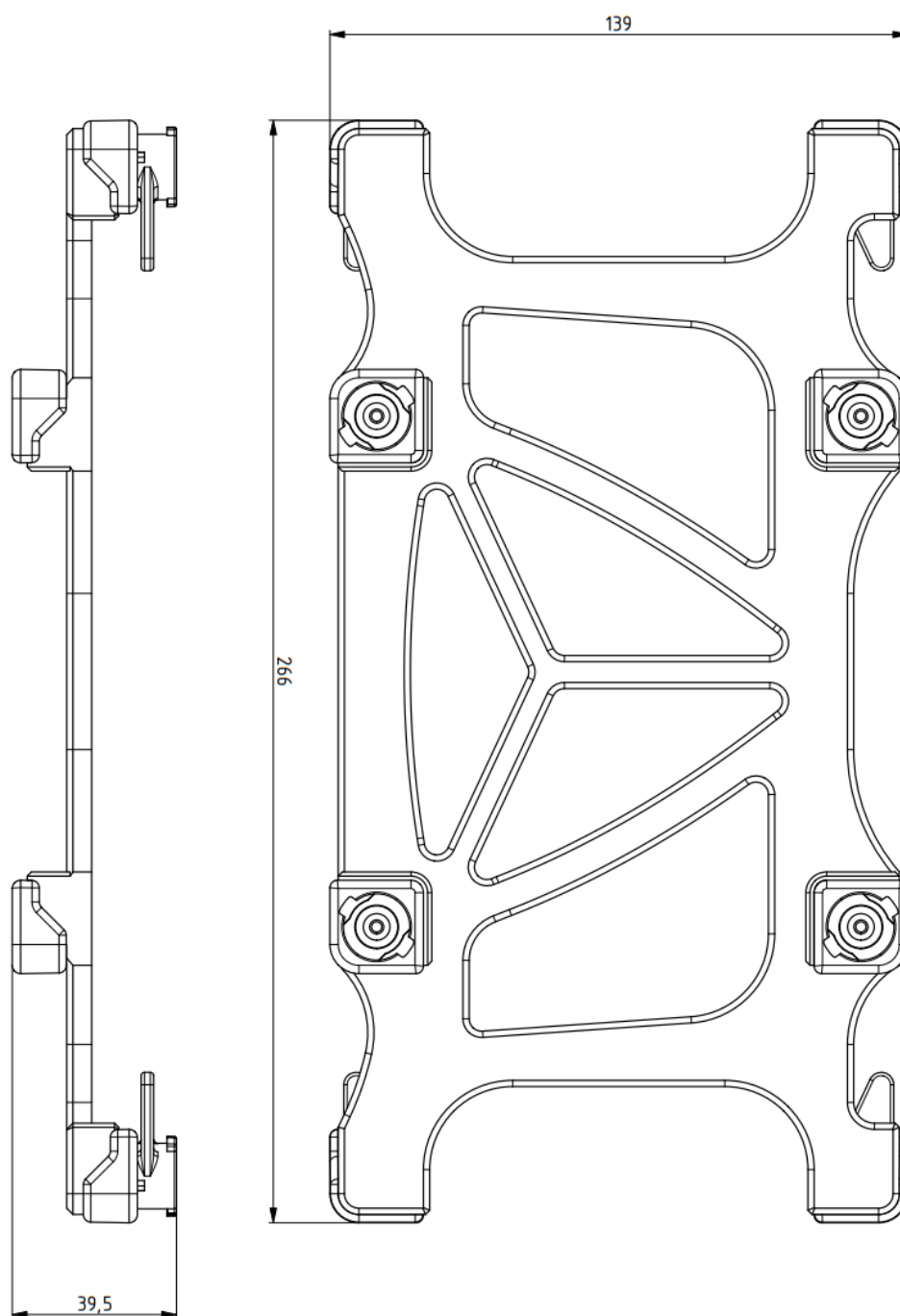
DS-MOUNT2-M is designed for the [SIRIUS_mini](#) line of data acquisition systems. This aluminum mounting plate is designed to fit the SIRIUS MINI instrument on top of SIRIUS modular slices, R2, R4, IOLITE R8, SBOX, DS-BP2i, and DS-BP4i.

DS-MOUNT2-M features a handle and already known click mechanism for easy instrument clipping into place.



DS-MOUNT2-M

13.1. DS-MOUNT2-M Technical drawing



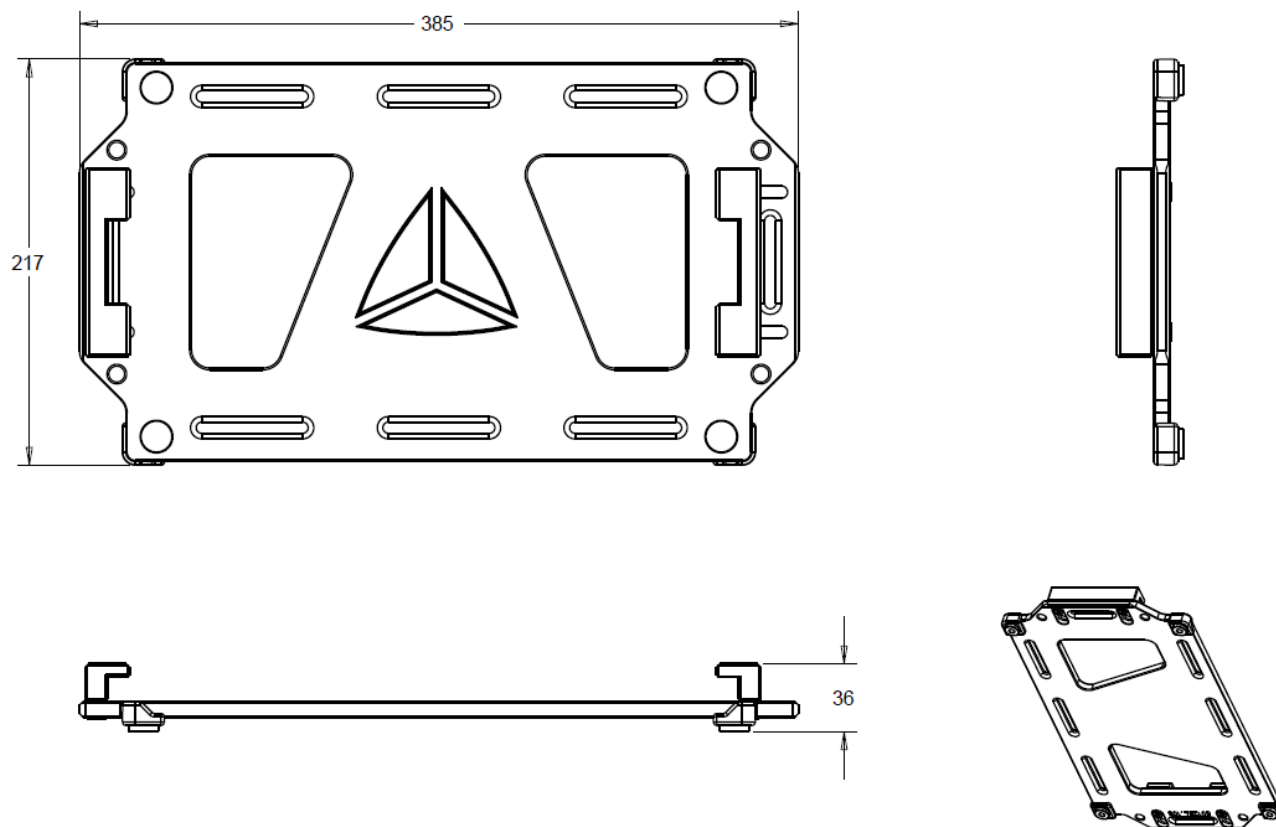
14. DS-MOUNT-R1x-R2x

Bottom aluminium mounting plate. Fits to: R1DB, R1B, R2DB, R2B, R2D.



DS-MOUNT-R1x-R2x

14.1. DS-MOUNT-R1x-R2x Technical drawing



Warranty information

Notice

The information contained in this document is subject to change without notice.

Note:

Dewesoft d.o.o. shall not be liable for any errors contained in this document. Dewesoft MAKES NO WARRANTIES OF ANY KIND WITH REGARD TO THIS DOCUMENT, WHETHER EXPRESS OR IMPLIED. DEWESOFT SPECIFICALLY DISCLAIMS THE IMPLIED WARRANTIES OF MERCHANTABILITY AND FITNESS FOR A PARTICULAR PURPOSE. Dewesoft shall not be liable for any direct, indirect, special, incidental, or consequential damages, whether based on contract, tort, or any other legal theory, in connection with the furnishing of this document or the use of the information in this document.

The copy of the specific warranty terms applicable to your Dewesoft product and replacement parts can be obtained from your local sales and service office. To find a local dealer for your country, please visit <https://dewesoft.com/support/distributors>.

Calibration

Every instrument needs to be calibrated at regular intervals. The standard norm across nearly every industry is annual calibration. Before your Dewesoft data acquisition system is delivered, it is calibrated. Detailed calibration reports for your Dewesoft system can be requested. We retain them for at least one year, after system delivery.

Support

Dewesoft has a team of people ready to assist you if you have any questions or any technical difficulties regarding the system. For any support please contact your local distributor first or Dewesoft directly.

Dewesoft d.o.o.
Gabrsko 11a
1420 Trbovlje Slovenia

Europe Tel.: +386 356 25 300
Web: <http://www.dewesoft.com>
Email: Support@dewesoft.com
The telephone hotline is available Monday to Friday from 07:00 to 16:00 CET (GMT +1:00)

Service/repair

The team of Dewesoft also performs any kinds of repairs to your system to assure a safe and proper operation in the future. For information regarding service and repairs please contact your local distributor first or Dewesoft directly on <https://dewesoft.com/support/rma-service>.

Restricted Rights

Use Slovenian law for duplication or disclosure. Dewesoft d.o.o. Gabrsko 11a, 1420 Trbovlje, Slovenia / Europe.

Printing History

Version 2.0.0, Revision 217 Released 2015 Last changed: 23. July 2018 at 16:54.

Copyright

Copyright © 2015-2019 Dewesoft d.o.o. This document contains information which is protected by copyright. All rights are reserved. Reproduction, adaptation, or translation without prior written permission is prohibited, except as allowed under the copyright laws. All trademarks and registered trademarks are acknowledged to be the property of their owners.

Trademarks

We take pride in our products and we take care that all key products and technologies are registered as trademarks all over the world. The Dewesoft name is a registered trademark. Product families (KRYPTON, SIRIUS, DSI, DS-NET) and technologies (DualCoreADC, SuperCounter, GrandView) are registered trademarks as well. When used as the logo or as part of any graphic material, the registered trademark sign is used as a part of the logo. When used in text representing the company, product or technology name, the ® sign is not used. The Dewesoft triangle logo is a registered trademark but the ® sign is not used in the visual representation of the triangle logo.

Safety instructions

Your safety is our primary concern! Please be safe!

Safety symbols in the manual



Warning

Calls attention to a procedure, practice, or condition that could cause the body injury or death



Caution

Calls attention to a procedure, practice, or condition that could possibly cause damage to equipment or permanent loss of data.

General Safety Instructions



Warning

The following general safety precautions must be observed during all phases of operation, service, and repair of this product. Failure to comply with these precautions or with specific warnings elsewhere in this manual violates safety standards of design, manufacture, and intended use of the product. Dewesoft d.o.o. assumes no liability for the customer's failure to comply with these requirements.

All accessories shown in this document are available as an option and will not be shipped as standard parts.

Environmental Considerations

Information about the environmental impact of the product.

Product End-of-Life Handling

Observe the following guidelines when recycling a Dewesoft system:

System and Components Recycling

Production of these components required the extraction and use of natural resources. The substances contained in the system could be harmful to your health and to the environment if the system is improperly handled at its end of life! Please recycle this product in an appropriate way to avoid unnecessary pollution of the environment and to keep natural resources.



This symbol indicates that this system complies with the European Union's requirements according to Directive 2002/96/EC on waste electrical and electronic equipment (WEEE). Please find further information about recycling on the Dewesoft web site www.dewesoft.com



Restriction of Hazardous Substances

This product has been classified as Monitoring and Control equipment and is outside the scope of the 2002/95/EC RoHS Directive. However, we take care of our environment and the product is lead-free.

General safety and hazard warnings for all Dewesoft systems

Safety of the operator and the unit depend on following these rules.

- Use this system under the terms of the specifications only to avoid any possible danger.
- Read your manual before operating the system.
- Observe local laws when using the instrument.
- DO NOT touch internal wiring!
- DO NOT use higher supply voltage than specified!
- Use only original plugs and cables for harnessing.
- You may not connect higher voltages than rated to any connectors.
- The power cable and connector serve as Power-Breaker. The cable must not exceed 3 meters, the disconnect function must be possible without tools.
- Maintenance must be executed by qualified staff only.
- During the use of the system, it might be possible to access other parts of a more comprehensive system. Please read and follow the safety instructions provided in the manuals of all other components regarding warning and security advice for using the system.
- With this product, only use the power cable delivered or defined for the host country.
- DO NOT connect or disconnect sensors, probes or test leads, as these parts are connected to a voltage supply unit.
- Ground the equipment: For Safety Class 1 equipment (equipment having a protective earth terminal), a non-interruptible safety earth ground must be provided from the mains power source to the product input wiring terminals.
- Please note the characteristics and indicators on the system to avoid fire or electric shocks. Before connecting the system, please read the corresponding specifications in the product manual carefully.

- The inputs must not, unless otherwise noted (CATx identification), be connected to the main circuit of category II, III and IV.
- The power cord separates the system from the power supply. Do not block the power cord, since it has to be accessible for the users.
- DO NOT use the system if equipment covers or shields are removed.
- If you assume the system is damaged, get it examined by authorized personnel only.
- Adverse environmental conditions are Moisture or high humidity Dust, flammable gases, fumes or dissolver Thunderstorm or thunderstorm conditions (except assembly PNA) Electrostatic fields, etc.
- The measurement category can be adjusted depending on module configuration.
- Any other use than described above may damage your system and is attended with dangers like short-circuiting, fire or electric shocks.
- The whole system must not be changed, rebuilt or opened.
- DO NOT operate damaged equipment: Whenever it is possible that the safety protection features built into this product have been impaired, either through physical damage, excessive moisture, or any other reason, REMOVE POWER and do not use the product until the safe operation can be verified by service-trained personnel. If necessary, return the product to Dewesoft sales and service office for service and repair to ensure that safety features are maintained.
- If you assume a more riskless use is not provided anymore, the system has to be rendered inoperative and should be protected against inadvertent operation. It is assumed that a more riskless operation is not possible anymore if the system is damaged obviously or causes strange noises. The system does not work anymore. The system has been exposed to long storage in adverse environments. The system has been exposed to heavy shipment strain.
- Warranty void if damages caused by disregarding this manual. For consequential damages, NO liability will be assumed!
- Warranty void if damage to property or persons caused by improper use or disregarding the safety instructions.
- Unauthorized changing or rebuilding the system is prohibited due to safety and permission reasons (CE).
- Be careful with voltages >25 VAC or >35 VDC! These voltages are already high enough in order to get a perilous electric shock by touching the wiring.
- The product heats during operation. Make sure there is adequate ventilation. Ventilation slots must not be covered!
- Only fuses of the specified type and nominal current may be used. The use of patched fuses is prohibited.
- Prevent using metal bare wires! Risk of short circuit and fire hazard!
- DO NOT use the system before, during or shortly after a thunderstorm (risk of lightning and high energy over-voltage). An advanced range of application under certain conditions is allowed with therefore designed products only. For details please refer to the specifications.
- Make sure that your hands, shoes, clothes, the floor, the system or measuring leads, integrated circuits and so on, are dry.
- DO NOT use the system in rooms with flammable gases, fumes or dust or in adverse environmental conditions.
- Avoid operation in the immediate vicinity of high magnetic or electromagnetic fields, transmitting antennas or high-frequency generators, for exact values please refer to enclosed specifications.
- Use measurement leads or measurement accessories aligned with the specification of the system only. Fire hazard in case of overload!

- Lithium ion batteries are classified as not hazardous when used according to the recommendations of the manufacturer described in Battery Safety Data Sheet, which is available for download from [this link](#).
- Do not switch on the system after transporting it from a cold into a warm room and vice versa. The thereby created condensation may damage your system. Acclimatise the system unpowered to room temperature.
- Do not disassemble the system! There is a high risk of getting a perilous electric shock. Capacitors still might be charged, even if the system has been removed from the power supply.
- The electrical installations and equipment in industrial facilities must be observed by the security regulations and insurance institutions.
- The use of the measuring system in schools and other training facilities must be observed by skilled personnel.
- The measuring systems are not designed for use in humans and animals.
- Please contact a professional if you have doubts about the method of operation, safety or the connection of the system.
- Please be careful with the product. Shocks, hits and dropping it from already- lower level may damage your system.
- Please also consider the detailed technical reference manual as well as the security advice of the connected systems.
- This product has left the factory in safety-related flawlessness and in proper condition. In order to maintain this condition and guarantee safety use, the user has to consider the security advice and warnings in this manual.

EN 61326-3-1:2008

IEC 61326-1 applies to this part of IEC 61326 but is limited to systems and equipment for industrial applications intended to perform safety functions as defined in IEC 61508 with SIL 1-3.

The electromagnetic environments encompassed by this product family standard are industrial, both indoor and outdoor, as described for industrial locations in IEC 61000-6-2 or defined in 3.7 of IEC 61326-1.

Equipment and systems intended for use in other electromagnetic environments, for example, in the process industry or in environments with potentially explosive atmospheres, are excluded from the scope of this product family standard, IEC 61326-3-1.

Devices and systems according to IEC 61508 or IEC 61511 which are considered as “operationally well-tried”, are excluded from the scope of IEC 61326-3-1.

Fire-alarm and safety-alarm systems, intended for the protection of buildings, are excluded from the scope of IEC 61326-3-1.

Documentation version history

Version	Date	Notes
V23-1	2.10.2023	Initial version